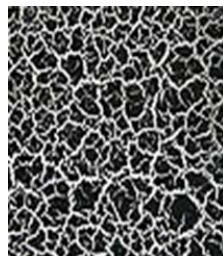




Crack Color



CRACK Black on white base color

CRACK Products Lineups: Black, White, Blue, Red, Green and Yellow

Operation Manual

1	Base Color	The base color comes out from the cracked parts. You can choose whichever base color you like.
2	Painting of intercoat clear	Paint intercoat clear after painting the base color.
3	Drying of intercoat clear	Drying for approximately 1 minute: Big crack comes out. Drying for approximately 3~5 minutes: Small crack comes out. Drying time depends on temperature.
4	Painting CRACK	Paint CRACK after the drying time. *Dilute by general urethane thinner. *Stir CRACK and urethane thinner well because of high viscosity. Start cracking after painting CRACK.
5	Painting Clear	Paint Topcoat Clear after finishing cracking. *Any clear is acceptable.

Cautions

When you handle this product, make sure to use rubber gloves and glasses to protect your skin and eyes.
In case it gets into your eyes, wash them with running water thoroughly and see a doctor.
In case it comes into contact with your skin, please wash it thoroughly until the slimy feeling is gone.
If you feel pain and something amiss, ask a doctor for instruction.
After use, make sure to close the lid firmly and leave it where it dark and cold, away from the direct sun.
Please keep it away from young children.

Signal Inc., SHOW UP Division
2-6-8 Aoshinke Mino Si Osaka, Japan 562-0024
Tel. 072-727-7123 Fax. 072-727-2678 Email. info@showup.jp
<http://www.showup.jp>